



Regional District of
Kitimat-Stikine

Indigenous Engagement
Requirements in EDMA





Consultation Scope

RDKS' Consultation Scope

First Nations' Governments and Indigenous Governing Bodies (IGBs)

Electoral Area C & E

- Gitga'at
- Haisla
- Kitasoo/Klemtu
- Lax Kw'alaams
- Kitselas
- Kitsumkalum

Electoral Area B

- Gitanmaax
- Gitanyow
- Gitsegukla
- Gitwangak
- Hagwilget
- Kispiox
- Sik-e-dakh
- Witset
- Gitxsan Huwilp Govt

Electoral Area A & D

- Tahltan Central Gov.
- Tahltan Band
- Iskut
- Nisga'a Nation
- Laxgalts'ap
- Gitwinksihlkw
- Gitlaxt'aamiks
- Gingolx

Regional Districts during Response...

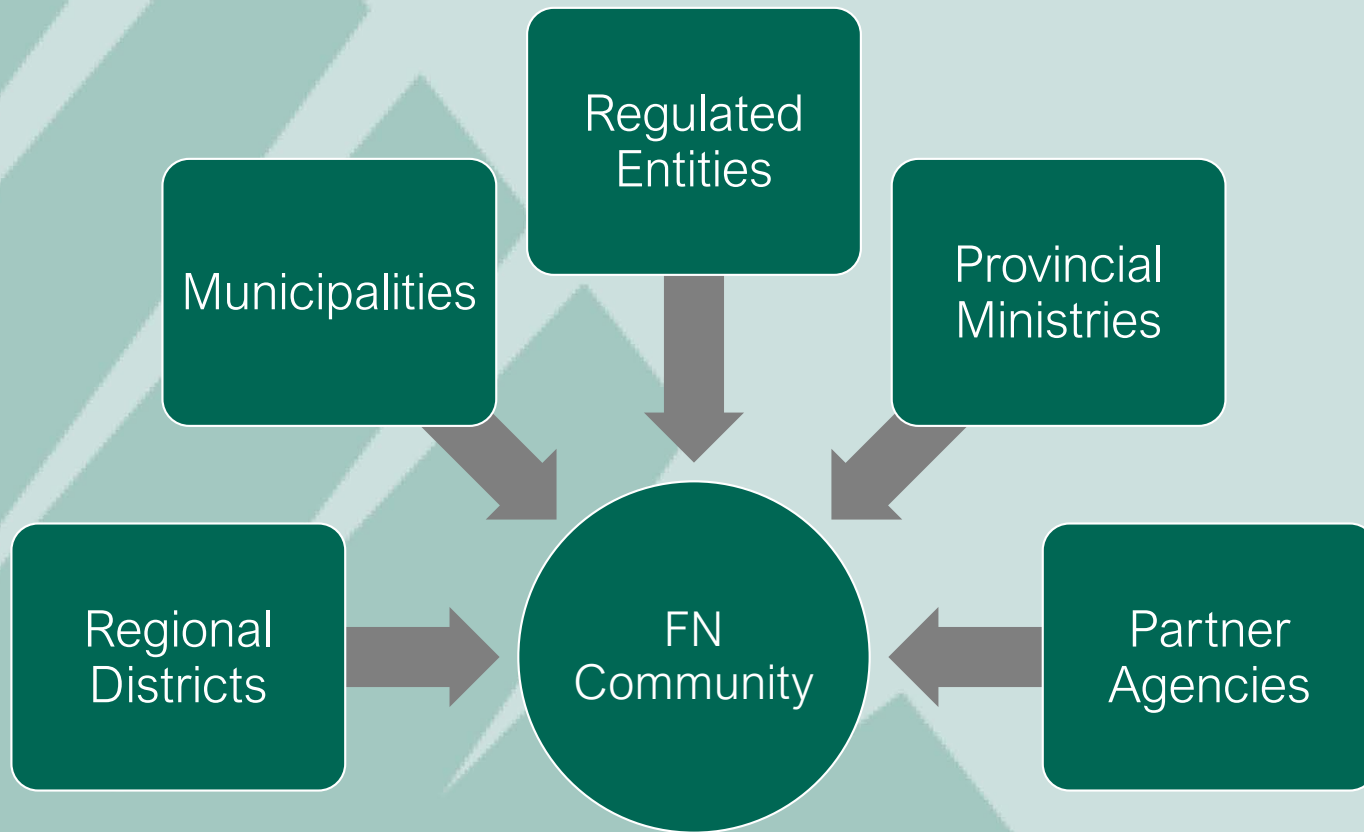
State of Local Emergency (SOLE)

- Gitanmaax
- Gitanyow
- Gitsegukla
- Gitwangak
- Hagwilget
- Kispiox
- Sik-e-dakh
- Witset
- Gitxsan Huwilp Govt

Evacuation Order

- Kispiox
- Witset
- Gitxsan Huwilp Govt

Cumulative IER Scope for FNs and IGBs





Capacity and Funding Limitations



Consultation scope
Overlapping Jurisdictions
Duplication of Efforts
Staffing shortfalls

Sustainable Funding
Emergency Programs (and
EPCs)
Support through changing
governance





CAPACITY/
FUNDING
MODELS IN
FN EM

- No Federal funding to support full-time EM Program Staff
- Emergency Management Assistance Program (EMAP) provides funding for on-reserve EM activities on a Project only basis
- No legislated onus to maintain an Emergency Program
- Provincial funding temporary, limited to two years so far

Advocacy Opportunity – FN EM Structure Permanent Funding

Full Time Emergency Program Coordinators:

- Are dedicated to a single program
- Provide consistency through frequent election cycles
- Support the EM Program through turnover/reassignment
- Enable long-term relationship building with neighboring EM Programs
- Have time to build programs, seek funding, and work through all four phases of EM.
- Create consistency in the community and in the region.





Regulating Cooperation

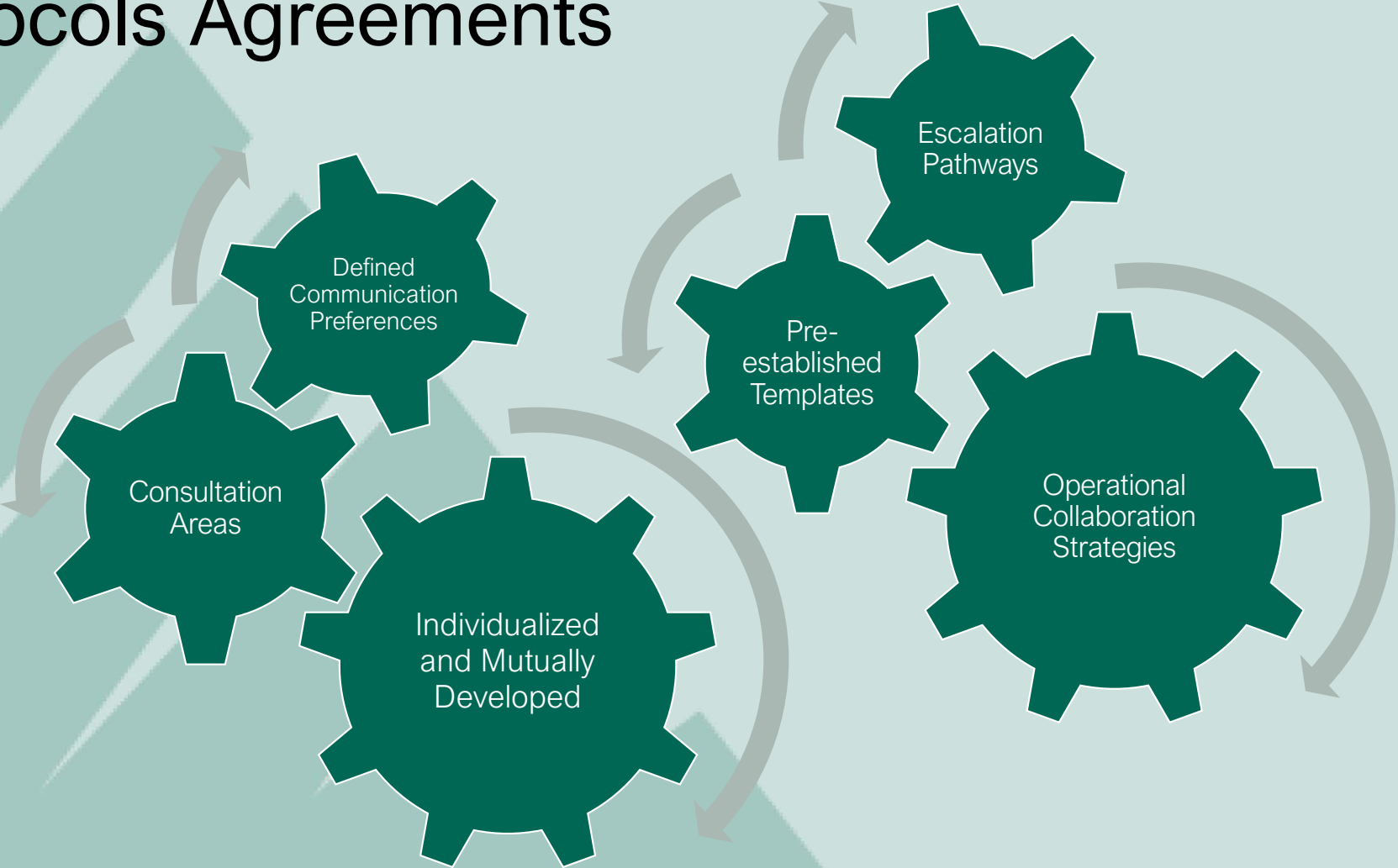
REGULATIONS vs RELATIONSHIPS

<p>The Province determines when local authorities are required to perform consultation.</p>	<p>Allows for FN/IGB to determine where and when and what is important. Allows for coordination and real-life cooperation that is meaningful and collaborative.</p>
<p>The Province determines which local authority emergency measures require consultation.</p>	<p>Allows for FN/IGB to determine which measures they wish to be consulted on, or jointly actioned. Allows for flexibility and practicality in emergency response.</p>
<p>The Province determines what is to be captured in EM plans and Risk assessments from IGBs and FN Gobs and provides that consultation results must all be captured.</p>	<p>Allows for meaningful traditional knowledge inclusion, shared approaches and collaboration opportunity that makes sense for an area with multiple potential opinions that may be considered but not required.</p>



Emergency Protocols Agreements (EPAs)

EM Protocols Agreements



Components

Communications

- Preferred Methods/Notification Stages
- Distribution Channels/Escalation Pathways
- Information Sharing

Joint Measures

- Jointly published emergency instruments or mapping (templates)
- Site-level response/mutual aid
- Resource allocation/requisition opportunities
- Pre-established operational decision thresholds

Consultation

- Consultation Areas mapped
- C&C levels by response activity/emergency power
- Delegation Matrix for consultation

ESS Provisions

- Level one responses
- Evacuation response
- Host Community planning
- Community Navigator ID and strategies

Mitigation and Planning

- Strategies and consultation approaches



Kitsumkalum/RDKS Pilot Agreement

Mutual Goals

To create an agreement that can be used by anyone responding to an emergency in the RDKS or Kitsumkalum

To create an agreement that enables cooperation between EOCs

To create an agreement that reflects our operational relationship

To create pre-established templates and decision thresholds, including a delegation/decision matrix.

To reduce inefficiency and delays during response

To define areas of consultation and notification



Kitsumkalum FN/RDKS – Pilot Agreement

Components	Benefits
<ul style="list-style-type: none"> • Consultation Areas Mapped (OCAP and CARE friendly) • Differences between notification and consultation areas established • Colour coding used for significant, important, or critical areas 	<ul style="list-style-type: none"> • Immediate indication to RD of what level of consultation is required based on hazard area • Not creating consultation fatigue when unnecessary • Highlighting that an area is of particular concern or cultural significance without having to share details.
<ul style="list-style-type: none"> • Pre-established templates • Pre-established operational thresholds for joint measures (where relevant) 	<ul style="list-style-type: none"> • Speed, consistency and efficiency • Reduces delays in decision making, supports FPIC
<ul style="list-style-type: none"> • Annual review mechanism and opportunity for policy group review/approval 	<ul style="list-style-type: none"> • Supports continued relationship building, and the involvement of Chief/Council and RDKS board (ahead of response).

EM Protocols as one solution...

Consultation areas mapped and defined which could make consultation scope more manageable and result in potential reduction of engagement fatigue

Efficiency/Consistency in Emergency Response

Operational plan regardless of staff turnover/availability

Flexibility and individuality for actual preferences in knowledge sharing, consultation and operational activities



Thank You Questions?

Contact: jagar@rdks.bc.ca

Or

cyunkws@rdks.bc.ca

Regional District of Kitimat-Stikine

Suite 300 - 4545 Lazelle Avenue

Terrace, B.C. V8G 4E1

