

# **Regional Districts: *A Federation of Members***

---

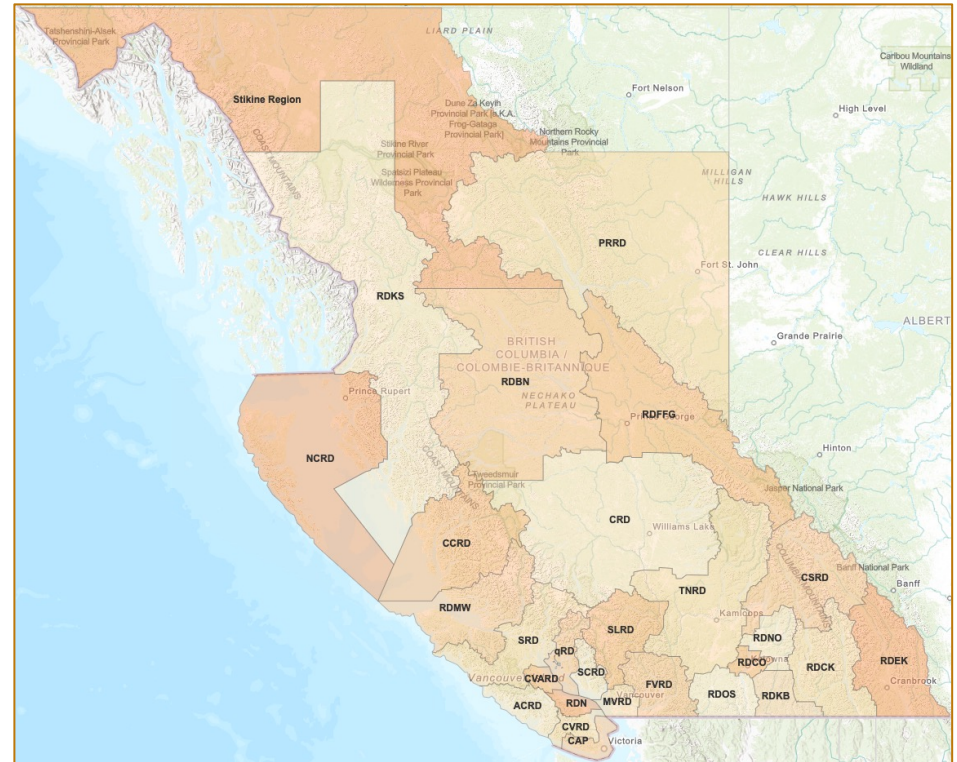
# Outline

- **Overview of regional district system**
- **Q&A with local RD**
- **Questions**



# Overview of Regional Districts

- 27 Regional Districts
- Unique to BC
- Regional & local functions
- Rural representatives - directly elected
- Municipal and Treaty First Nation representatives - appointed from members of elected councils
- Each RD provides different services



# About Regional Districts

**Supporting  
Municipalities and Treaty  
First Nations**

- Federation of members

**Coordinating  
Infrastructure between  
Communities**

- Enable cross-boundary service partnerships

**Responding to Diverse  
Local Service Needs**

- Any service, scale, and delivery





**Matching Who Pays,  
Who Benefits and Who  
Decides**

- Flexible service boundaries and cost recovery options

**Planning & Service  
Delivery in Rural Areas**

- Local government for rural planning and services

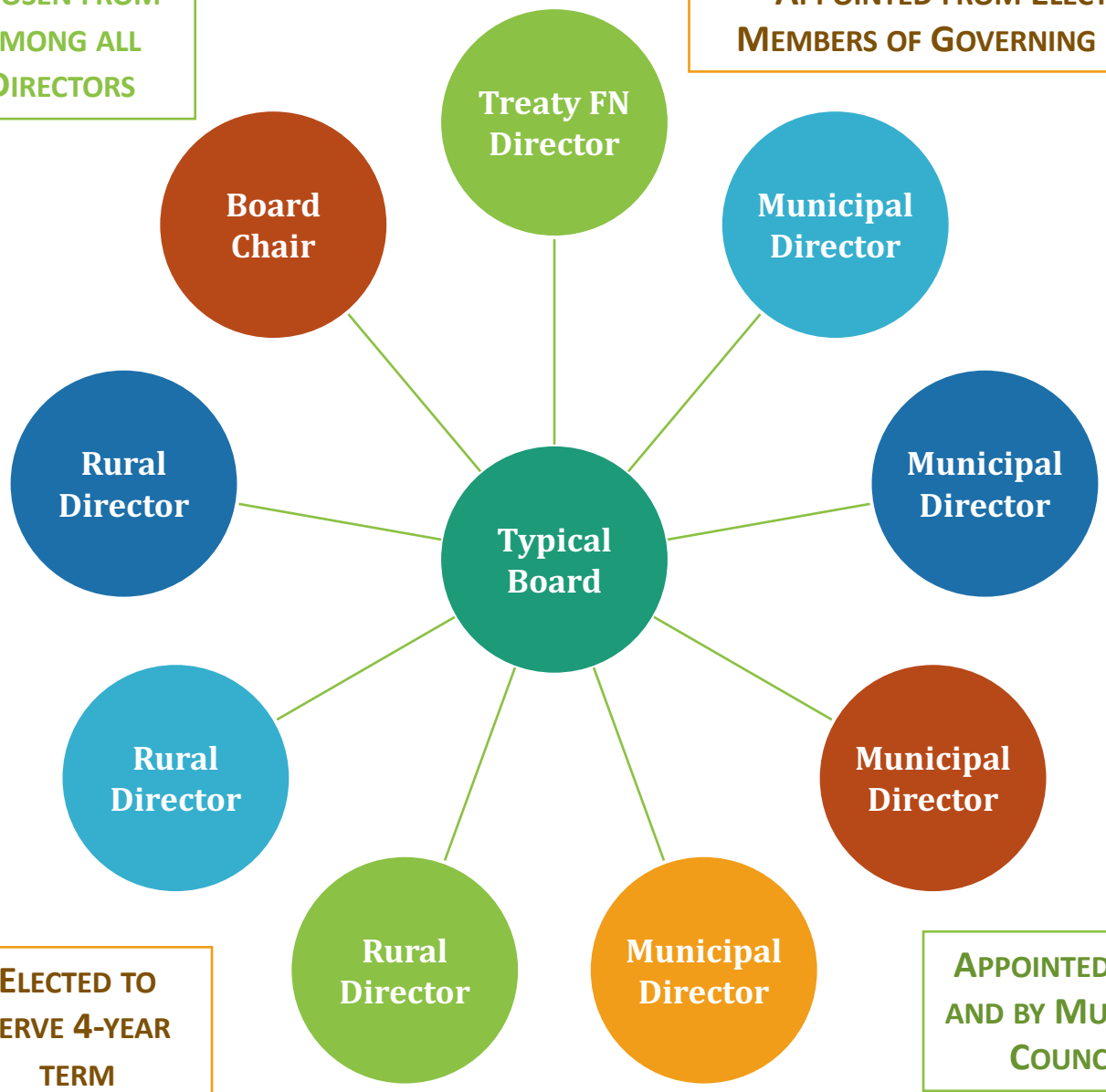
# Role of Regional Districts

WHO DOES WHAT?			
CITY OF PRINCE GEORGE			
Municipal Government	Regional District	Provincial Government	Federal Government
 <ul style="list-style-type: none"> <li>• Road maintenance</li> <li>• Snow removal</li> <li>• Water supply</li> <li>• Sewer/storm water management</li> <li>• Solid waste collection</li> <li>• Parks, trails and playgrounds</li> <li>• Cemetery</li> <li>• Recreation facilities (e.g., CN Centre)</li> <li>• Bylaws</li> <li>• Municipal RCMP</li> <li>• PG Fire Rescue</li> <li>• Business licenses</li> <li>• Community planning and development</li> <li>• City Hall</li> <li>• Municipal property tax</li> </ul>	 <ul style="list-style-type: none"> <li>• Solid waste management (landfill, recycling depot and transfer stations)</li> <li>• Residential services outside City boundaries</li> <li>• Regional parks and recreation</li> <li>• Rural area planning and development</li> <li>• 911 operation</li> <li>• Fire dispatch</li> <li>• Heritage conservation</li> </ul> <ul style="list-style-type: none"> <li>• Pooled borrowing through MFA</li> </ul>	 <ul style="list-style-type: none"> <li>• Schools</li> <li>• Provincial parks</li> <li>• Crown land resource extraction</li> <li>• Health care</li> <li>• Social services</li> <li>• WorkSafe</li> <li>• ICBC</li> <li>• Justice</li> <li>• Post-secondary education</li> <li>• All highway maintenance (including highways within City boundaries)</li> <li>• Provincial income tax</li> <li>• Provincial property tax</li> <li>• Sales tax</li> </ul>	 <ul style="list-style-type: none"> <li>• Income tax</li> <li>• Employment insurance</li> <li>• Child tax benefits</li> <li>• Student loans</li> <li>• Military</li> <li>• National parks</li> <li>• International travel</li> <li>• Banking</li> <li>• Criminal law</li> <li>• Foreign affairs</li> </ul>

**Regional  
Districts  
are  
Federations**

**CHOSEN FROM  
AMONG ALL  
DIRECTORS**

**APPOINTED FROM ELECTED  
MEMBERS OF GOVERNING BODY**



**ELECTED TO  
SERVE 4-YEAR  
TERM**

**APPOINTED FROM  
AND BY MUNICIPAL  
COUNCILS**

**ALTERNATE DIRECTORS GENERALLY  
APPOINTED FOR ALL POSITIONS**

# Regional Districts: Special Voting Rules

## Unweighted Corporate

Every Director votes, each casts one vote

Used to elect chair and to adopt procedure and regulatory bylaws

## Stakeholder Vote

Only Directors from the service area vote, each casts a number of votes based on population

Used for service administration and operation decisions

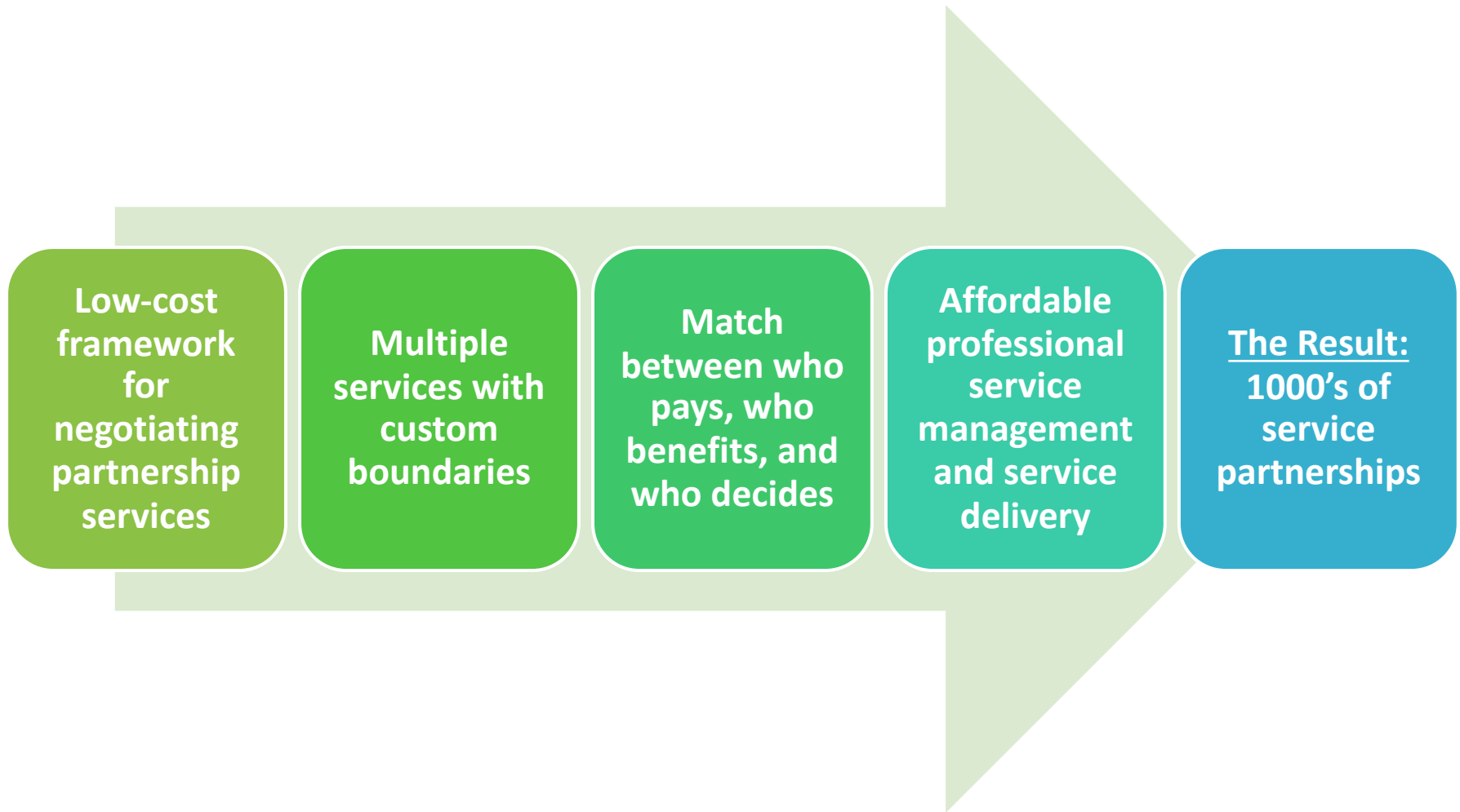
## Weighted Corporate

Every Director votes, each casts a number of votes based on population

Used for corporate financial decisions (e.g. annual budget)

Note: applies to all but Metro Vancouver RD

# Why Partner for Services?





# Infinite Service Delivery Options

## 3. OPTIONS

**DIRECT  
PROVISION**

**CONTRACT  
(PUBLIC)**

**CONTRACT  
(PRIVATE)**

**ARM'S  
LENGTH**

## 1. THE SERVICE

**LOCAL**

FVRD Rural  
Fire

Hornby Island  
Community Hall

Pineridge  
Mosquito  
Control  
Program

Robson Valley  
TV  
Rebroadcasting

**SUB -  
REGIONAL**

RDFFG Fire  
Department  
Coordination

Rural  
Cumberland  
Fire Protection

RDFFG Waste  
Reduction

Bulkley Valley  
Economic  
Development

**REGIONAL**

RDCK Geospatial  
Service

Okanagan  
Regional  
Library

FVRD  
Mosquito Control

Capital  
Housing

**MULTI-  
REGIONAL**

Comox Strathcona  
Waste  
Management

North Island  
911 Service

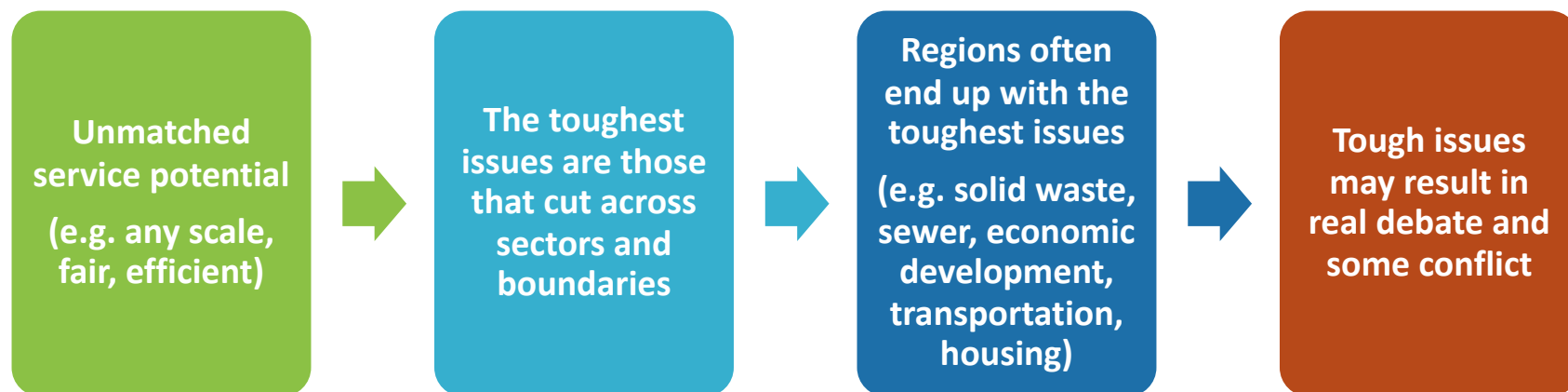
RDBN  
Para-Transit  
Service (Hwy16)

Okanagan  
Starling Control  
Program

## 2. FIND YOUR PARTNER

# What's Your Role?

The opportunities for results are considerable



RD's need YOU to realize their potential

---

# Supports and Resources Available

Provincial legislation  
and supports (e.g.  
advice, education)

Strong, collaborative  
associations (e.g.  
UBCM, MFA, LGLA,  
LGMA, CivicInfo, MIA)

Infrastructure  
programs

Local government  
staff

---

# More Information

- *Ministry of Municipal Affairs*  
<https://www2.gov.bc.ca/gov/content/governments/local-governments>
- *Regional District Toolkit*  
[https://www2.gov.bc.ca/assets/gov/british-columbians-our-governments/local-governments/governance-powers/ubcm\\_rd\\_toolkit\\_fullversion.pdf](https://www2.gov.bc.ca/assets/gov/british-columbians-our-governments/local-governments/governance-powers/ubcm_rd_toolkit_fullversion.pdf)



# Q&A with an RD

- Tell us about your regional district
  - What steps do you take to make sure all members understand their role and some of the complexities of the system, such as voting rules?
  - What kinds of service and governance challenges does your Regional District experience and how do you overcome them?
  - What is one of your Regional district's greatest service success stories?
-

# Questions?



Ministry of  
Municipal Affairs

