

BC ASSESSMENT

Getting to Know BC Assessment

Local Government Leadership Academy Elected Official Seminar

Michael Spatharakis – Manager, Local Government Customers
January 2019

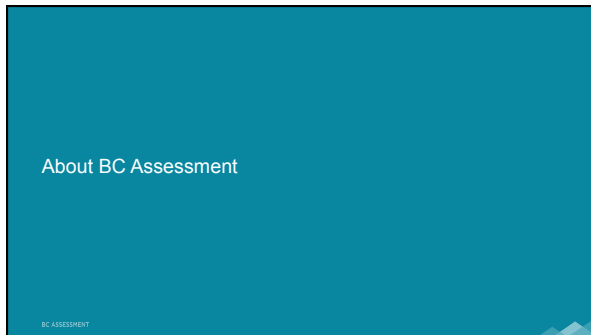
Topics

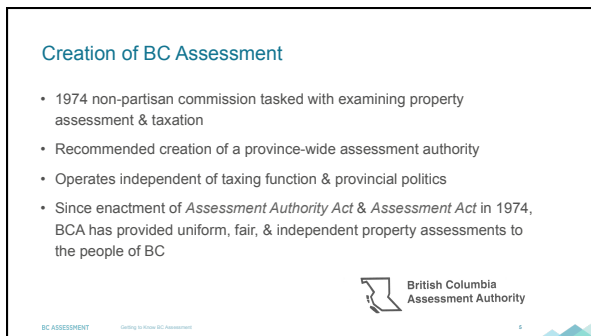
1. About BC Assessment
2. Valuation
3. Classification
4. Exemptions
5. Assessment cycle & key dates
6. Appeal process
7. Relationship between assessment & taxation
8. 2019 assessment roll summary
9. Collaborating with BC Assessment

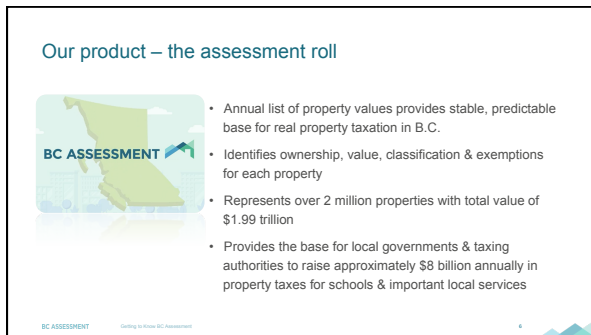
BC ASSESSMENT Getting to Know BC Assessment 2

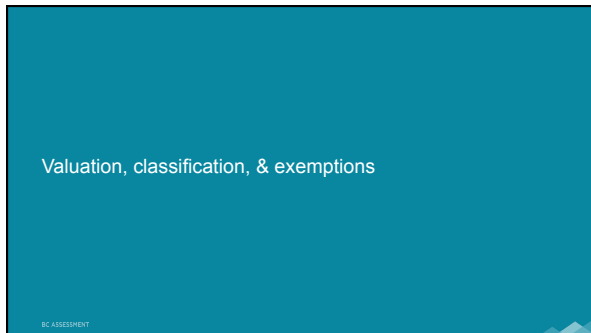


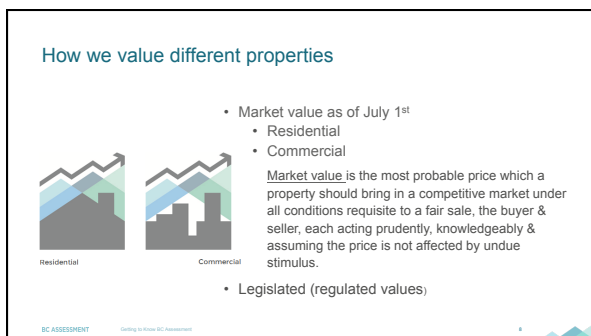
BC ASSESSMENT Getting to Know BC Assessment 3













Exemptions

- An exemption applied by BC Assessment is a release from paying all or a portion of a tax levied by a local taxing authority
- Common exemptions are:
 - Statutory – granted by legislation
 - Permissive – granted by taxing authorities

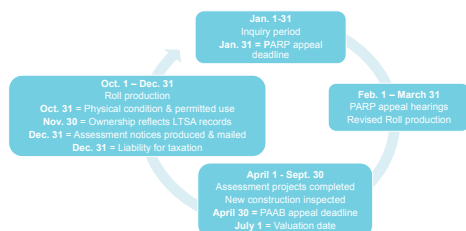


BC ASSESSMENT Getting to Know BC Assessment

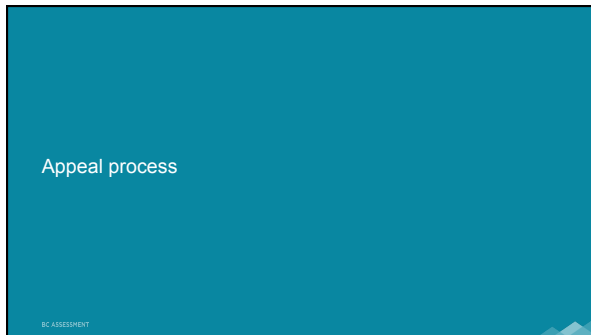
Assessment cycle & key dates

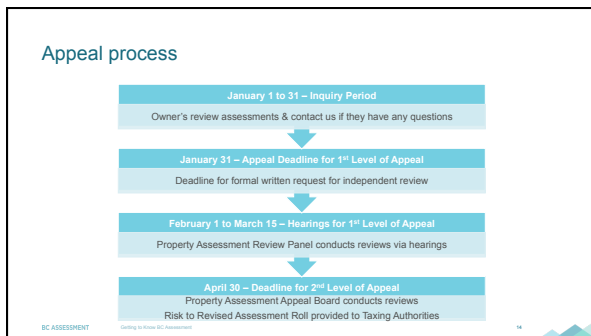
BC ASSESSMENT

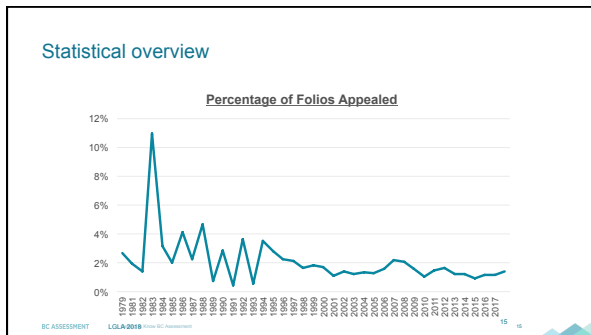
Assessment cycle & key dates

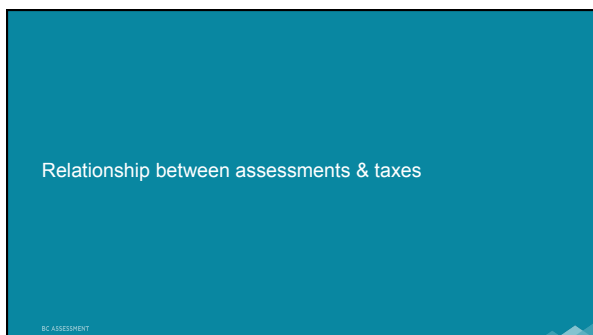


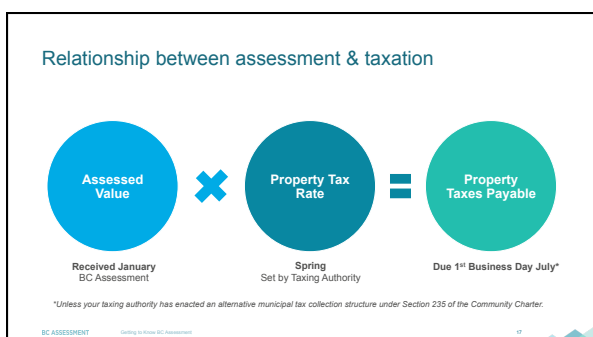
BC ASSESSMENT Getting to Know BC Assessment

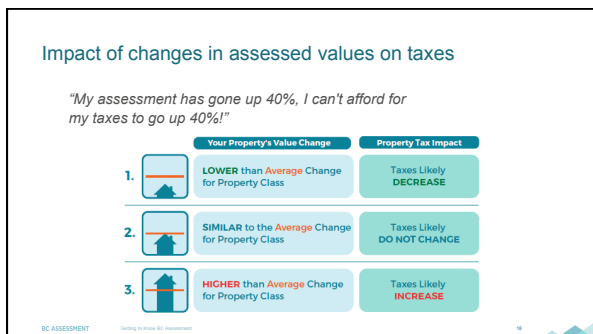


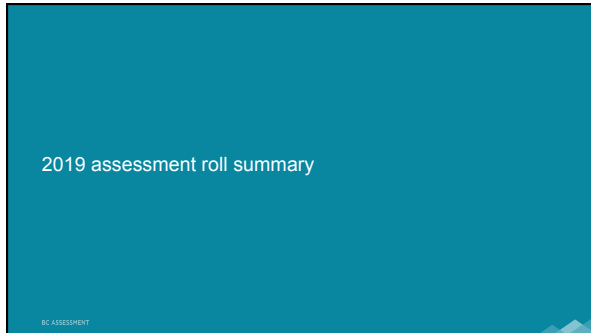


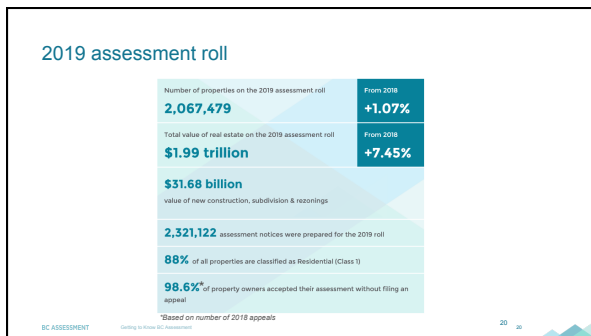


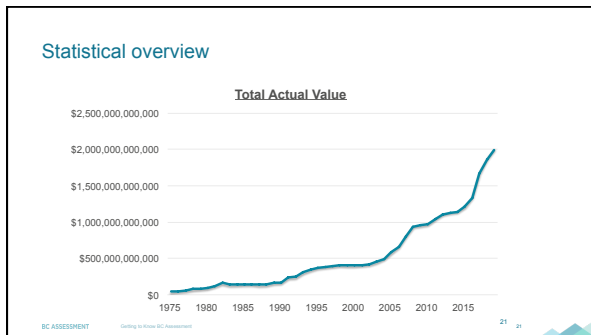


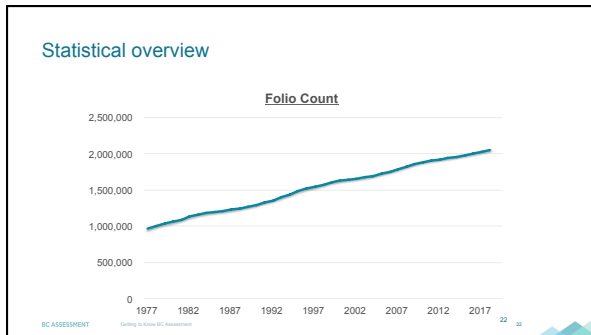


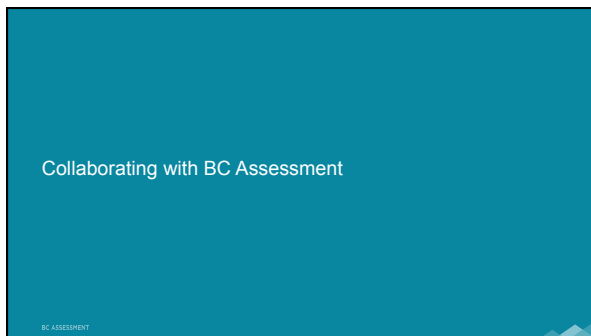












Collaborating to achieve our mandates

- By sharing information & working together BC Assessment & Taxing Authorities can:
 - ✓ Ensure fair & equitable property assessments
 - ✓ Maintain stable & predictable assessment & tax rolls
 - ✓ Optimize property tax revenue levied & collected by taxing authorities
 - ✓ Increase citizen awareness of property assessment & taxation

BC ASSESSMENT Getting to Know BC Assessment