

UBCM

Long-Term Infrastructure Plan

Presentation to Local Government Leadership Academy

Gary MacIsaac, Executive Director UBCM
February 21, 2013

UBCM

Presentation Outline

- What is LTIP
- Process: federal, UBCM and FCM
- LTIP recommendations: FCM and UBCM
- Specifics of BC's Gas Tax Agreement
 - How it works
 - Our Key Advocacy Themes

UBCM

Long-Term Infrastructure Plan

- Federal initiative to inform future infrastructure programs to replace those under Building Canada Plan, including:
 - Gas Tax Fund
 - Building Canada Fund
- Consultation stage has now concluded
- Timing of program announcements uncertain

UBCM

LTIP Consultation Process

- Numerous working groups and other meetings
- Series of Roundtables across the country
 - Summer 2012; chaired by federal Minister; various "stakeholders", including local governments
- Senior officials level meetings
 - Summer 2012; chaired by InfraCan ADM; UBCM invited to Gas Tax permanency discussion

UBCM

UBCM Process

- June/August 2012: member release/survey
- September: convention session/ LTIP submission
- Minister Bennett Working Group
- Member consultations ongoing
- Gas Tax Partnership Committee

UBCM

National vs. Provincial program design

- National level program design: Elements that will likely be consistent across the country.

E	Eligible Project Categories	Recipient obligations
---	-----------------------------	-----------------------
- Provincial level program design: elements

Wf	How the obligations are fulfilled BC's "tier system"	Who delivers the funding Other customization
----	---	---

UBCM **FCM Process**

- LTIP technical working groups; roundtable
- FCM Board Meetings and Conventions
- Various campaigns and communications

Infrastructure Report Card	Target 2014
Cut my commute	Gas Tax calculator
LTIP Submission: The Road to Jobs and Growth	

UBCM **Key FCM Recommendations**

- Long term predictable funding (15-20 years)
- \$5.75 billion nationally (up from \$3.25 b)
- Improved BCF/GTF programming

Eligibility for all local government infrastructure Improved flexibility and streamline programming
--

- P3 screen for projects over \$200 million

UBCM **FCM recommendation: CEIF**

- Core Economic Infrastructure Fund
 - transit, roads, bridges, water, wastewater
 - \$2.5 billion federal contribution (to be matched by provinces/local governments)
 - Allocated funding with federal government deciding annually what projects to fund

UBCM **FCM Recommendation: CMIIS**

- Centre for Municipal Infrastructure Innovation and Sustainability
 - In partnership with FCM
 - Build LG capacity to improve asset management and innovative infrastructure practices; Expand InfraGuide
 - Expanding Green Municipal Fund endowment

UBCM **UBCM LTIP Submission**

Infrastructure	<ul style="list-style-type: none"> • All LG infrastructure • Allocated and application based • Infrastructure Renewal
Commitment	<ul style="list-style-type: none"> • Dedicated LG funding • Long-term, predictable • Indexing
Capacity	<ul style="list-style-type: none"> • Streamlined programming • Support planning and infrastructure management • Local P3 choices

UBCM **UBCM Recommendations: Infrastructure and Delivery**

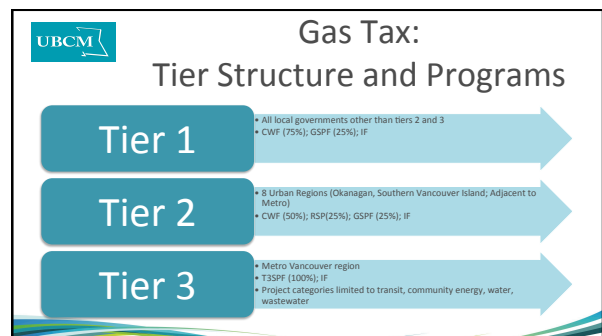
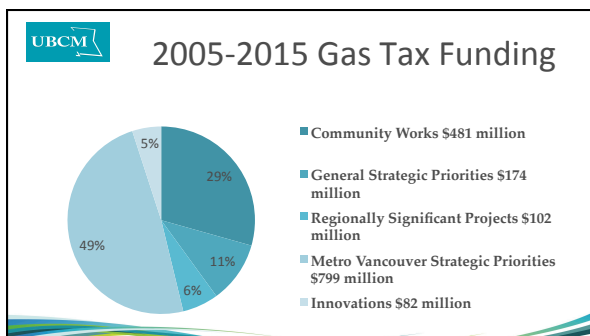
- Eligibility for all local government infrastructure
- Mix of allocated and application based funding, with some local choice about priorities
- Maintain eligibility for infrastructure renewal and rehabilitation

UBCM Recommendations: Funding Commitments

- Dedicated local government funding
 - Specific to BCF-style replacement programs, since Gas Tax is already dedicated to LG
- Long-term, predictable funding
 - At least 15 year funding commitments
- Indexing to avoid erosion

UBCM Recommendations: Recognize/support LG capacity

- Streamlined programming
 - Accountabilities that consider LG capacity
- Support for community and infrastructure planning and management
 - Avoid hard requirements
- Support for sensible P3s (local choice)



Key advocacy themes

- Broaden scope – all infrastructure
 - Current scope especially challenging for rural
- Maintain mix of allocated and pooled
 - Is that balance right? Is the decision making framework right? How do we make sure this works over time?
- Local choice
 - P3; asset management; communications